



alman
işbirliği

DEUTSCHE ZUSAMMENARBEIT



GIZ Support to Refugees and Host Communities (SRHC) Cluster in Turkey

Providing support and technical cooperation in the areas of education, employment, capacity development and social cohesion - together we create a common picture.

Implemented by:

giz Deutsche Gesellschaft
für Internationale
Zusammenarbeit (GIZ) GmbH

Germany's international cooperation with Turkey dates back to the late 1950s. On 10 November 1970, the Federal Republic of Germany signed an official agreement on technical cooperation with the Republic of Turkey (registered in the Official Gazette no. 13663). Since then, Turkey has evolved from a developing country receiving official development assistance to an emerging economy that meanwhile has become a donor country itself. Currently, the German Federal Ministry of Economic Cooperation and Development (BMZ) focuses its cooperation in Turkey on supporting the country in responding to the refugee situation. Working on behalf of BMZ and the EU Regional Trust Fund in Response to the Syrian Crisis, the "Madad Fund", GIZ is assisting the Government of Turkey in support and technical cooperation in the areas of education, employment, capacity development and social cohesion.

The Deutsche Gesellschaft für Internationale Zusammenarbeit (GIZ) GmbH is Germany's leading provider of international cooperation services, with BMZ as its main commissioning party. GIZ has been operating since 1 January 2011. It brought together three organisations: the Deutsche Gesellschaft für Technische Zusammenarbeit (GTZ) GmbH, the German Development Service (DED) gGmbH and InWEnt – Capacity Building International, Germany. As a federal enterprise operating in more than 120 countries, GIZ supports the German government in achieving its objectives in the field of international cooperation for sustainable development.

GIZ has implemented over 300 projects in Turkey since the start of its cooperation. It has been operating its own office in Ankara since 1998 and an additional one in Gaziantep since 2014.

In addition to its BMZ project portfolio, GIZ is currently implementing projects in Turkey on behalf of the German Federal Ministry for the Environment, Nature Conservation and Nuclear Safety (BMU) in the areas of renewable energies and energy efficiency. Furthermore, GIZ has also been engaged in EU pre-accession assistance programmes through its International Services business unit.

Table Of Contents

1. INTRODUCTION
2. THE RESPONSE TO THE SYRIAN CRISIS IN TURKEY
3. PARTNERSHIPS
4. SRHC PRESENCE IN TURKEY (MAP)
5. SRHC IMPACT
6. SRHC IMPACT - STORIES
7. SRHC PROJECTS
 - 7.1 Education Project Pilot (USFTA)
 - 7.2 Education Project (BilSy)
 - 7.3 Multi-Service Centres Project (MSCs)
 - 7.4 Community Centre Project (CCP)
 - 7.5 Cash-for-Work - Infrastructure Project (CfW)
 - 7.6 Cash-for-Work - Handicraft Project (CfW)
 - 7.7 TVET and Labour Market Services Project (TVET/LMS)
 - 7.8 Turkish-German Exchange Project (EXP)
 - 7.9 Qudra Regional Programme (Qudra)

The black and white photos featured here are part of the 'Black & White Photography and Darkroom Project' implemented by Welthungerhilfe in cooperation with Sirkhane and the support of the SRHC Cluster. Syrian and Turkish children aged 8-16 took these photos to capture moments of their daily realities. The photos intend to empower the protagonists to tell their own stories and to be a tribute to the young people living in Turkey.





Federal Minister Dr. Gerd Müller during his visit in March 2015

1. Introduction

Since the onset of the war in Syria in 2011, the Government of Turkey has made tremendous efforts to welcome and support more than 3.6 million Syrian refugees under Temporary Protection currently registered in Turkey.² However, due to both the scale and duration of this crisis, Turkish institutions have been stretched beyond their capacity to provide services and build social cohesion.

In March 2015, Dr. Gerd Müller, the German Federal Minister for Economic Cooperation and Development, visited Lebanon and South-East Turkey to observe the impact of the protracted situation in Syria on the countries affected by the large influx of refugees. As an immediate follow-up, GIZ was commissioned for the implementation of two pilot projects and a substantial scale-up in volume the year after.

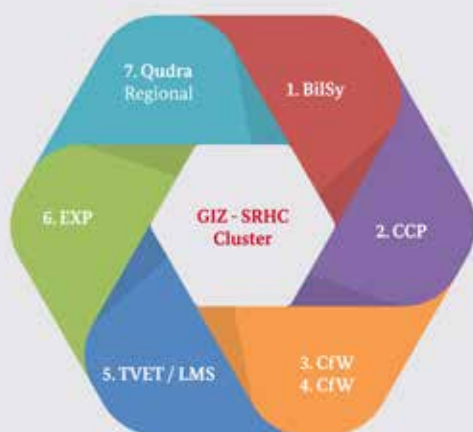
1 <https://www.gerd-mueller.de/2015/03/bmz-deutschland-verstaerkt-fluechtlingshilfe-fuer-tuerkei-und-libanon/>

2 http://www.goc.gov.tr/icerik6/temporary-protection_915_1024_4748_icerik

In 2016, the GIZ Country Office Turkey established the Support to Refugees and Host Communities (SRHC) Cluster to coordinate the projects funded by the German Federal Ministry for Economic Cooperation and Development (BMZ) to support the Turkish authorities and local partners in their response to the Syrian crisis. The SRHC Cluster focuses on four main programmatic components: employment and skills development, education, social cohesion and capacity development.

Among the bilateral contributions, the German government currently provides the largest funding in Turkey.

The active projects of the SRHC Cluster



1. **BiSy** Education Project
2. **CCP** Community Center Project
3. **CFW** Cash-for-Work Infrastructure Project
4. **CFW** Cash-for-Work Handicrafts Project
5. **TVET/LMS** TVET and Labour Market Services Project
6. **EXP** Exchange Project
7. **Qudra** Regional Programme



2. The Response to the Syria Crisis in Turkey

Initially, the Government of Turkey coordinated its humanitarian response through the Disaster and Emergency Management Presidency Agency (AFAD),³ but as the crisis continued, in 2014 the Directorate General for the Management of Migration (DGMM)⁴ was established as a mechanism to make the response more efficient and effective. Two early measures taken to protect and accommodate Syrians arriving in Turkey were the legislative measures that established “Temporary Protection Regulation” and the “Regulation on Work Permits”. More recently, after the elections in June 2018 a new team is being established under the Presidency Office (PO), previously the Prime Minister’s Office (PMO) Department for Strategic Development.

Also in 2014, the United Nations expanded its coordinated regional support for the Syria crisis through the development and implementation of the Regional Refugee and Resilience Plan (3RP),⁵ activated under the leadership of the UNHCR/UNDP joint regional secretariat. The 3RP is a broad partnership platform for UN, government agencies and non-governmental organisations to support and coordinate their planning, advocacy, fundraising, information management and monitoring within the humanitarian response.

3 <https://www.afad.gov.tr/en/2601/Turkey-Response-to-Syria-Crisis>

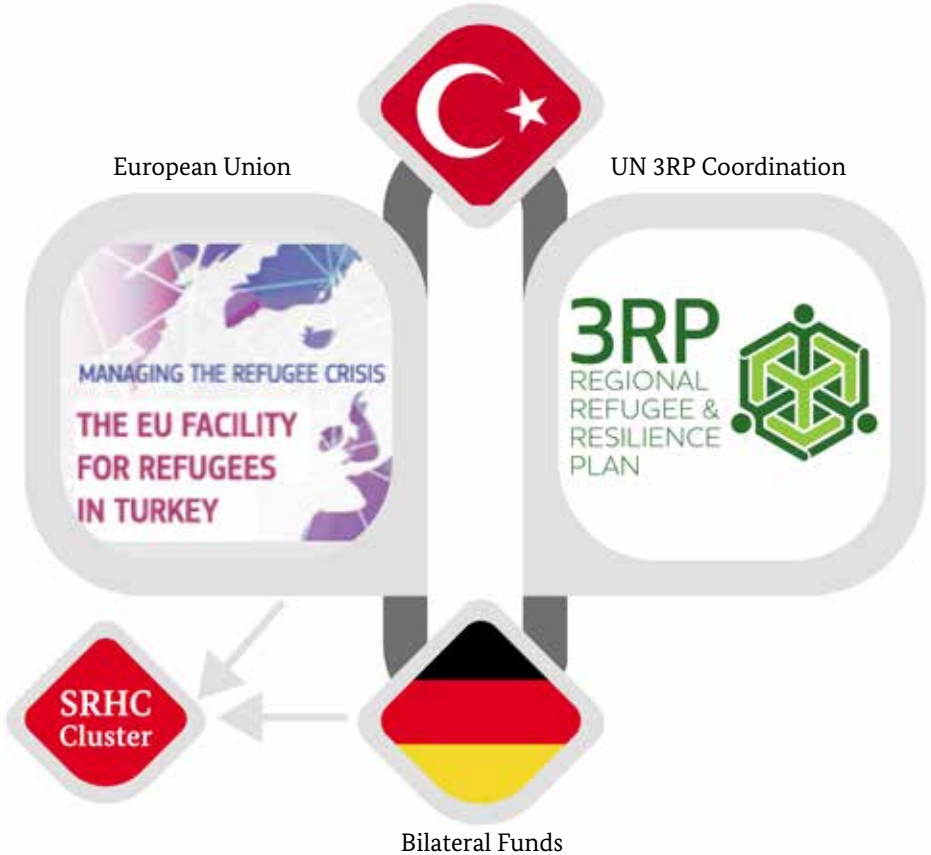
4 http://www.goc.gov.tr/main/Eng_3

5 <http://www.3rpsyriacrisis.org/the-3rp/>

Government of Turkey

European Union

UN 3RP Coordination



In Turkey, the 3RP facilitates national and international actors' coordination of efforts in the sectors of protection, basic needs, food security, health, education and livelihoods.

More recently, in 2016, the European Union (EU) established the Facility for Refugees in Turkey (FRIT)⁶ as an outcome of the migration agreement reached between the EU and Turkey on 18 March 2016. The Facility is a unique measure in the region, functioning to coordinate a fund of 6 billion Euros provided by the EU for Turkey to support humanitarian assistance, education, migration management, health, municipal infrastructure and socio-economic support.

⁶ https://ec.europa.eu/neighbourhood-enlargement/news_corner/migration_en

3. Partnerships

Partnerships are at the core of GIZ's technical approach.

SRHC Cluster projects are implemented as partnerships between GIZ and Turkish public institutions and non-profit organizations. GIZ's contribution to these collaborations at all levels includes providing its partners with regular technical support, promoting participatory processes and fostering transparency and accountability.

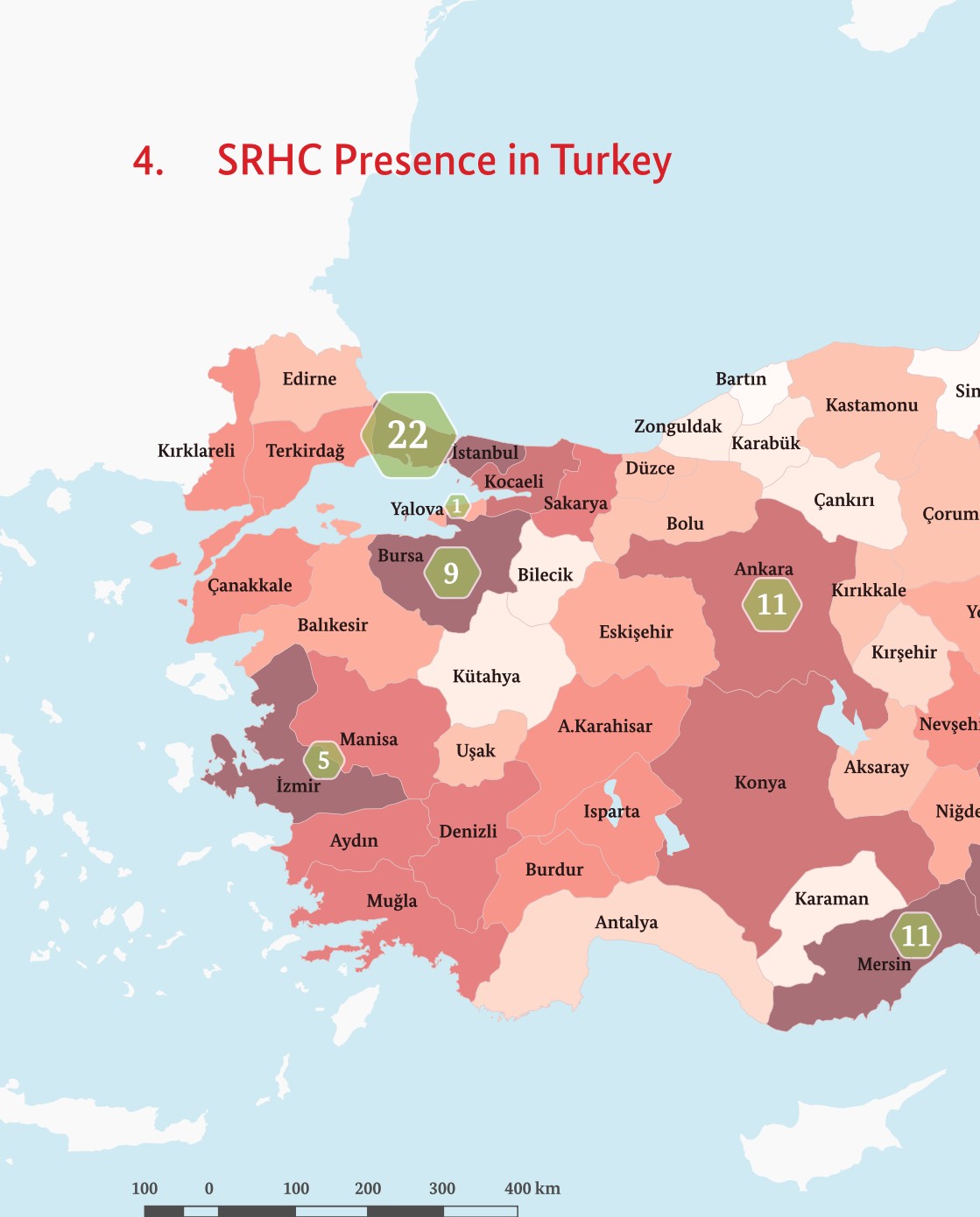
The GIZ SRHC Cluster's approach was highlighted as a good practice in humanitarian/development and transitional aid cooperation in the *Compendium on Good and Innovative Practices in the Regional Response to the Syria and Iraq Crisis Volume II* (2017).

GIZ's Political Partner is the new team that is being established under the Presidency Office (PO), previously the Prime Minister's Office (PMO) Department for Strategic Development.

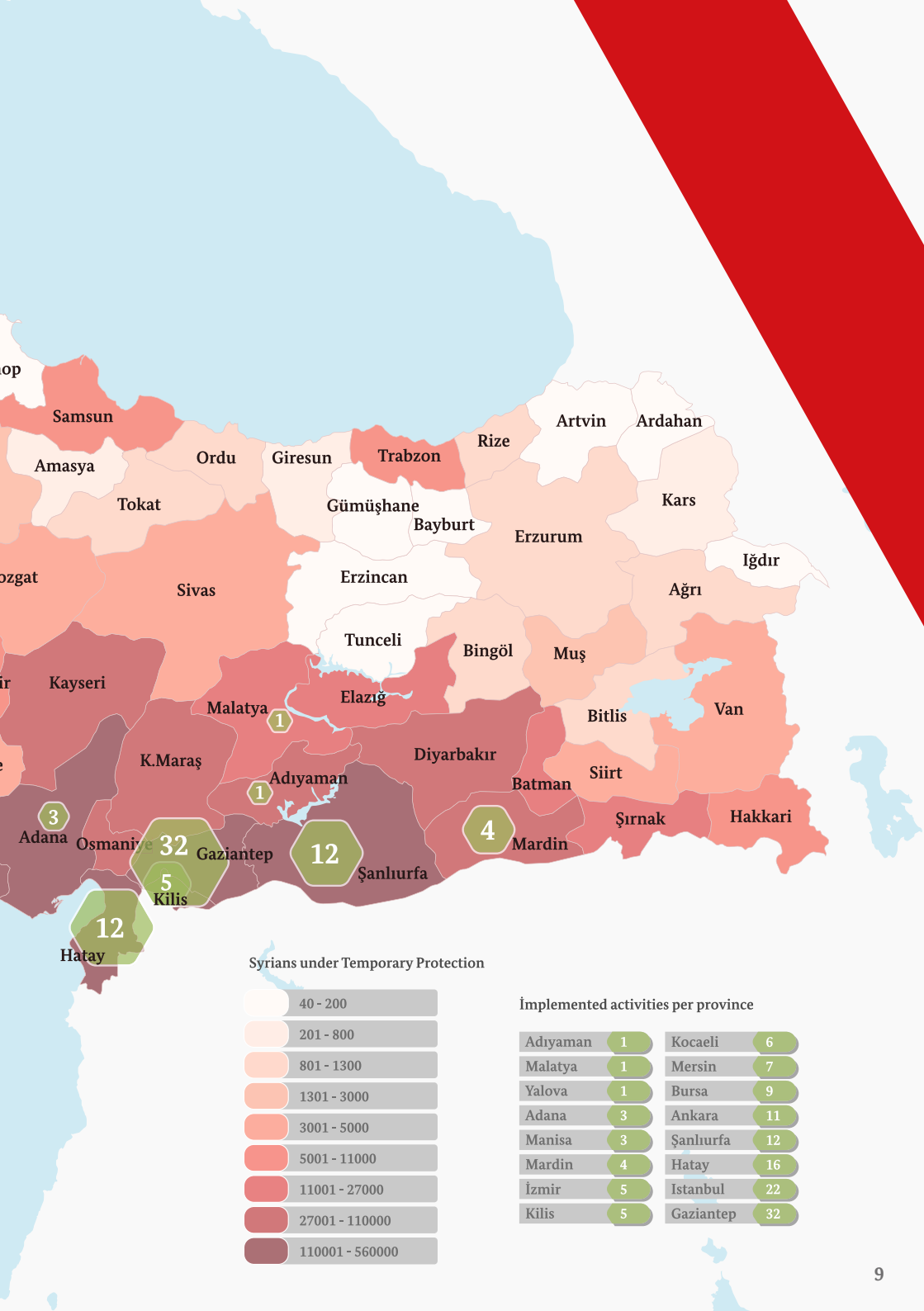
Government Partners include the Ministry of National Education (MoNE), the Ministry of Family, Labour and Social Services (MoFLSS), the Ministry of Youth and Sport (MoYS), the Ministry of Interior Affairs (MoIA) and the Ministry of Foreign Affairs (MoFA). Additional governmental partners include the Turkish Employment Agency İŞKUR, the Chambers of Industry and Commerce, as well as Provincial Governorates and Municipalities.

GIZ also works closely with non-governmental partners, both national and international NGOs. Among these are the Association for Solidarity with Asylum Seekers and Migrants (ASAM), the Human Resource Development Foundation (HRDF), the International Blue Crescent (IBC), the Social Syrian Gathering (SSG), YUVA, RIZK for Professional Development, Care International, Welthungerhilfe (DWHH), Support to Life (STL), the German Olympic Sports Confederation (DOSB), the Internationale Bund (IB), Goethe Institute, United Cities and Local Governments (UCLG), and GAP Youth Association.

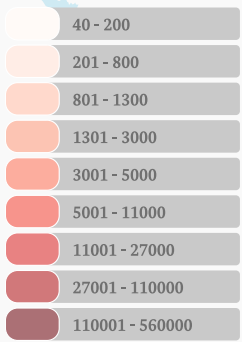
4. SRHC Presence in Turkey



Data source: Concentration of Syrians under Temporary Protection from DGMM Statistics - June 2018



Syrians under Temporary Protection



Implemented activities per province

Adiyaman	1	Kocaeli	6
Malatya	1	Mersin	7
Yalova	1	Bursa	9
Adana	3	Ankara	11
Manisa	3	Şanlıurfa	12
Mardin	4	Hatay	16
İzmir	5	Istanbul	22
Kilis	5	Gaziantep	32

5. SRHC Impact

The GIZ SRHC Cluster currently encompasses seven active projects, all of which are partnerships with the Government of Turkey that aim to improve opportunities for education and employment for Syrian refugees and the most vulnerable members of the Turkish host community. The overarching goals of all of our work in Turkey is to build national and local agencies' and organizations' capacity to provide social services for those most in need, and to strengthen social cohesion among and between these communities.

EMPLOYMENT AND SKILLS DEVELOPMENT

In the livelihoods sector the SRHC Cluster collaborates closely with MoFLSS the Turkish Employment Agency (İŞKUR), municipalities and local organizations. Through these partnerships, between 2016 and 2018, the SRHC Cluster has created and improved employment prospects for over **64,500** refugees and vulnerable members of the host community.

SRHC employment projects address the immediate needs of Syrian and Turkish individuals and families for income, while also opening long-term prospects for their employment through skills training, counselling for job seekers and small businesses, and promotion of supportive legislation.

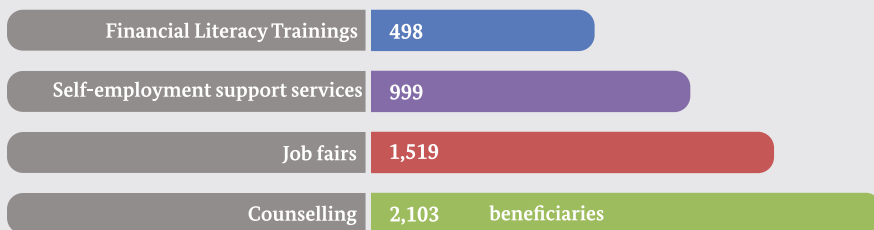
Two such initiatives are the Cash-for-Work projects, which have benefitted **19,500 refugees and members of the host community** through temporary job opportunities. The Cash-for-Work projects also include measures targeted towards Syrian refugees to expand their possibilities for employment. According to the Turkish Directorate General of Migration Management (DGMM), of the over 3.6 million Syrian refugees⁷ now in the country, 2 million - more than half - are of working age. The 'Regulations on Work Permits' enacted in January 2016 allow Syrians under temporary protection the possibility to be eligible for legal employment. To date, the Cash-for-Work projects have facilitated the **issuance of 2,900** of such permits, comprising **15%** of the total work permits now in force for refugees in Turkey.

⁷ http://www.goc.gov.tr/icerik6/temporary-protection_915_1024_4748_icerik

The SRHC Technical and Vocational Education and Training (TVET) and Labour Market Services project, implemented in cooperation with the MoNE TVET Directorate, takes a holistic approach to facilitating refugees' and host community members' participation in the labour market. The project includes training and guidance, supporting beneficiaries with CV and jobinterview preparation, job fairs and entrepreneurship support, also raising their awareness of Turkish labour market regulations and employment opportunities. Since 2016, over **5,000** people were provided with employment-related counselling services and support for those establishing and registering new businesses.

All prospective workers need relevant training and skills to find employment and livelihoods opportunities. To build refugees' and host communities' readiness for opportunities within the labour market, the SRHC Cluster facilitates their access to formal vocational education and non-formal skills development trainings. These and comparable vocational and skills trainings across the SRHC projects have reached over **40,000** refugees and vulnerable members of the host community. Among these are **9,200** participants of Turkish language courses ,which were conducted according to Public Education Centre (PEC) standards.

The SRHC labour market services



EDUCATION

Currently, of the 3.6 million Syrians under temporary protection in Turkey,⁸ approximately 1 million are school-age children and youth, of whom one third are not yet enrolled in any form of education.⁹ The SRHC projects cooperate with MoNE to improve learning environments in formal primary and secondary education for school-age Syrian and Turkish students.

Since 2016, through the TVET and Labour Market Services project, the USFTA education pilot project and the BilSy education project, **42** public schools all over Turkey have been rehabilitated, with improvements that include construction of new classrooms, reduction of architectural barriers, procurement of technical equipment and creation of areas for recreational and physical education.

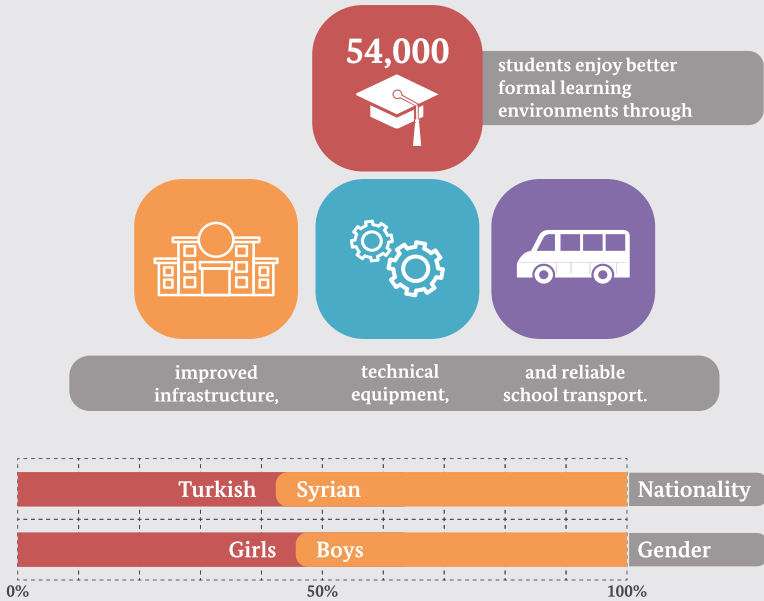
In addition, the BilSy project has provided transportation to facilitate students' access to **15** Temporary Education Centres (TECs). More than **4,600** students have been reached with this service.

Overall, **54,000** students have benefitted from access to better formal learning environments through the efforts of the SRHC. Moreover, these educational opportunities have been shared equally by Syrian and Turkish children and youth, as well as female and male students.

8 http://www.goc.gov.tr/icerik6/temporary-protection_915_1024_4748_icerik

9 <https://www.asylumineurope.org/reports/country/turkey/access-education-1>

Number of students reached, in total and disaggregated by nationality and gender

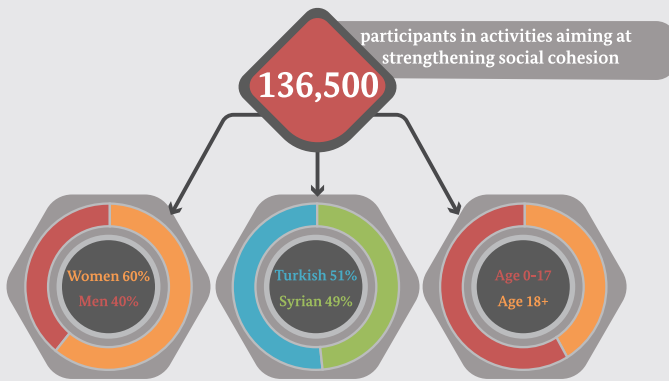


The SRHC Education projects build on the activities described above to expand access to education with additional measures to improve the quality of education. These include the developing and providing of learning materials, training teachers in intercultural competencies and other methods, providing Turkish language courses for Syrian teachers, and supporting sport and other extra-curricular activities.

SOCIAL COHESION

Fostering social cohesion by building dialogue among communities is an overarching goal of all SRHC Cluster projects. To strengthen social cohesion, the projects address three types of social relationships: 'Linking', which focuses on relationships between individuals (or groups) and state institutions, 'Bridging', referring to building relationships between social or cultural groups, and 'Bonding', which aims to strengthen relationships within social or cultural groups.

Participants in social cohesion activities



To strengthen social cohesion, the SRHC Cluster has mobilized **136,500** participants to engage in almost **2,000** various intercultural activities. These activities have included equal numbers of Syrian and Turkish participants, with a gender balance of 60% women and 40% men, and an almost equal ratio of children and adolescents to adults. Most of these activities have aimed at 'bridging' by opening opportunities for social interaction between refugees and members of the host communities. They included measures to strengthen group members' mutual willingness to interact with each other such as awareness-building sessions to reduce prejudices, opportunities to practice language skills, and also by increasing the frequency of interaction between these groups.

Multi-Services Centres (MSCs), commonly known as Community Centres (CCs), which are located in areas with high numbers of refugees, play a key role in providing protection services in community-based safe spaces. CCs are also catalyst to foster social cohesion processes and to promote refugees' empowerment. Within the SRHC Cluster, the MSCs Project and the CC Project together with

the regional programme Qudra have facilitated access to centres in the South-Eastern provinces of Kilis, Şanlıurfa, Gaziantep, Hatay, Mardin, Adana and Mersin, and also in Izmir, Istanbul and Ankara.

As a fundamental contribution to strengthen relationships between individuals, the SHRC cluster offered various protection-related services. Until April 2018, **130,800** beneficiaries have benefitted from advisory and counselling measures, such as legal advice or psychosocial counselling.

In CCs and schools, approximately **3,000** individuals have been trained as intermediaries, and supported to implement activities and processes that foster social cohesion processes in their communities. Similarly, through the SRHC BilSy project **900** youth volunteers have been trained and implemented social cohesion activities in their communities, reaching out to **35,000** children and youth. Teachers were trained in more effectively teaching Syrian and Turkish students in the same classrooms. The SRHC CC Project, which also applies a holistic approach, encourages host communities and refugees to engage in participatory decision-making processes. In addition, the CC Project provides trainings to representatives of institutions and organisations on intercultural awareness and social cohesion.

Under its Module on Facilitating Dialogue and Dissemination, the Qudra Programme launched the EU Madad Innovation Lab to bring together people from diverse backgrounds to jointly learn and develop innovative solutions to local challenges in the context of the Syrian and Iraqi crises. In 2018, this innovative format linked up young thinkers and entrepreneurs from the Syrian refugee and Turkish host communities seeking innovative solutions under the guiding theme of “Youth and Digital Innovation”.

The SRHC Cluster trains and supports intermediaries to foster long-term social cohesion processes.

Areas of training and number of participants

Empowerment and self-reliance **1,867**

Intercultural exchange **900**

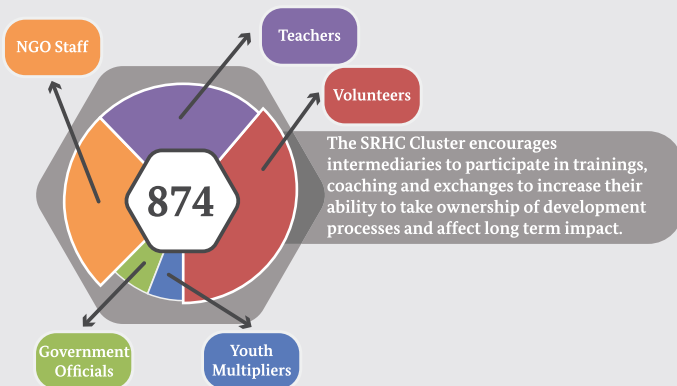
Teaching methodologies **223**

CAPACITY DEVELOPMENT

Partnerships are at the core of GIZ's technical cooperation approach. The SRHC Cluster empowers its partner organisations and institutions, as well as concerned individuals, by strengthening their knowledge, skills and capabilities and systems for cooperation, so they may better adapt to changing circumstances as they respond to forced displacement and migration.

To build its partners' financial, technical and administrative capacities, the seven SRHC projects have set up **61** financial instruments and established **36** official agreements with partner institutions. One important financial instrument, implemented by the SRHC MSC and CC Projects, is the "Community Initiative Fund" (CIF), which offered financial support to small-scale projects implemented by

Intermediaries reached by capacity development measures

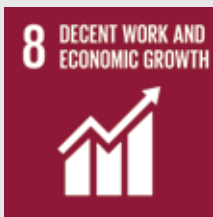


local NGOs. CIF is a complementary measure of the more extensive services provided by the CC Project. The CIF aims at developing the capacity of small community-based initiatives that reach out to the most vulnerable. Projects in the SRHC Cluster have, jointly with their partners, developed policy guidelines and thematic directives in relation to forced displacement and migration management.

Finally, the SRHC Cluster organised **25** different peer-to-peer learning and exchange channels for institutions and organisations, including structured meetings, study visits and conferences. The SRHC Turkish-German Exchange project, in particular, focuses on

providing government officials and partners in Germany and Turkey to exchange lessons and identify best practices on forced displacement and migration management. Similarly, through the TVET/LMS project, study exchanges for Turkish officials were organized to share successful refugee integration approaches. Capacity development is also a central component of the CC Project's action fields, aiming at developing capacities at individual and organizational level in the community centres and selected public institutions. Training measures include project management, leadership and management, human resources and staff care, participatory and needs-based approaches and social cohesion.

In order to provide sustainable results and impact, all projects of the SRHC Cluster have been conducted in line with the **Sustainable Development Goals** (SDGs). The projects contributed in particular to Goals 1, 3, 4, 5, 8, 10 and 16, and to the **Leave No One Behind** principle.



6. SRHC Impact – Stories

BilSy

“Let’s build the kind of future we would like to be a part of”

Story of Rawan, 21, from Syria -Idlib

Rawan stayed at a refugee camp in Kilis for 4 years before she recently moved to Gaziantep. After receiving a training to become a “Dialogue Champion” under the umbrella of the Education Programme for Syrian Refugees and Host Communities (BilSy) she wishes to help other youth who fled from the war in Syria to foster their self-confidence and sense of agency.



“I want to encourage them to form new networks based on common interests, and to inspire them to help build the kind of future they would like to be part of.”

Rawan took the opportunities offered by the BilSy project to interact with and join the Turkish community and to learn the Turkish language. She has been one of the first Syrians in Turkey who received the Turkish citizenship under the new

programme announced by the Turkish Government in 2016.

MSCs/
CCP

“We shared our food and our sorrows”

Story of Zain, 60, from Syria- Aleppo

It has taken time for 60-year-old Zain to feel at home in Turkey: *“I miss my home, my neighbours, my family in Aleppo.”* For three years now, she has been living with her husband and 3 of their children in Antakya, a city in the South East of Turkey. The rest of her family - 7 children and 12 grandchildren - have taken different paths throughout Turkey hoping to make a living.

Soon after her arrival in Turkey, her neighbours told Zain about the YUVA Community Centre in Kirikhan, and she has been participating

in its activities ever since. With the knitting and sewing skills she developed at the centre, Zain can now support her household by making clothes and repairing things – a small step towards more independence.

When Zain first came to Turkey, she felt very isolated: *“It was rough because of the communication problems.”* Now, at the centre, the language barrier she faces in daily life can be overcome. The Community Centre is a safe space where refugees and members of host communities come together and make new friends. Zain has formed friendships with Syrian and Turkish women: *“We shared our food and our sorrows.”*

Back in Syria, Zain used to work as a teacher. Her plan for the future is to teach Arabic classes at the Community Centre, building new hopes and dreams for herself and her family: *“I started to feel like I belong in this neighbourhood.”*



Cash-for-Work Handicrafts

“Now I don’t have to worry about tomorrow”

Story of Bedri, 40, from Turkey - Gaziantep

Today, Bedri, 40 years old, from Gaziantep, is the breadwinner in the household he shares with his parents. Before, he was unemployed for a long time. The main reason for this was his age.

After having received a training within the framework of the Cash-for-Work programme, implemented in cooperation with the Gaziantep Chamber of Industry, he was hired by a company as a machine operator. His supervisor and his manager are very satisfied with his performance and therefore might hire him for a longer term.

Bedri’s expectations of the programme have been fully met: *“I expected to have an employment for a short term and now I might even be hired for longer. Even my salary is above what I expected. In my age it is very hard to find a job. Now I don’t have to worry anymore about tomorrow.”*

A further benefit for all is his knowledge of Arabic: at work he translates between his manager and his Syrian colleagues with whom he has developed very good relationships.



“I’m not alone anymore”

Story of Rama, 22, from Syria



Rama is 22 years old and currently living in Istanbul. With her family, she came from Syria to Turkey almost 7 years ago. Rama is one of the 22 EU Madad Labs Round II participants in Turkey. The EU Madad Labs are part of a growing number of innovation labs, bringing together people from diverse backgrounds to jointly learn and develop innovative solutions to local challenges in the context of the Syrian and Iraqi crises. For its 2nd round in 2018, this innovative format brought together young thinkers and entrepreneurs from the Syrian refugee and Turkish host communities, seeking innovative solutions under the guiding theme of “Youth and Digital Innovation”.

“I have tried to do so many things, but I have realised that I cannot do much on my own. I need support or guidance. Then I saw the EU Madad Labs and the headline caught me immediately – A Solution for Refugees and Host Communities. I applied right away and started to think many digital and innovative projects that I could realise with the support of the Labs. Our team formed of Turkish and Syrian youth, developed a prototype called “Melek” (Angel). The aim of the project is to establish an online platform to provide support to language learning, social cohesion and positive sciences. This will be enabled by a website, application, Youtube channel and virtual reality. We would like to reach children, youth and their families.”

Observations from a “Job Clubs Leaders Training”

The “Job Clubs Leaders Training” was held by the SRHC TVET & LMS Project in Ankara for 30 İŞKUR staff, consisting of Job Club leaders who are actively involved in the Job Club Project run by İŞKUR. During the training, the participants learned about leadership methods, cultural differences and harmony and how to improve cross-cultural communication in counselling.

Participants like one “Job and Vocational”-Counsellor from Istanbul who attended the training, appreciated its long-term impact: *“The training touched upon very useful topics. I felt that my point of view on the topics raised has changed after training. We are planning to organise job clubs for Syrian refugees as well, therefore, I will use the methods and the information I learned at my job.”*



Experience from the first study visit to Germany
 Story of Erhan Sirt, Senior Expert from Prime Minister’s Office
 (at the time of the visit)

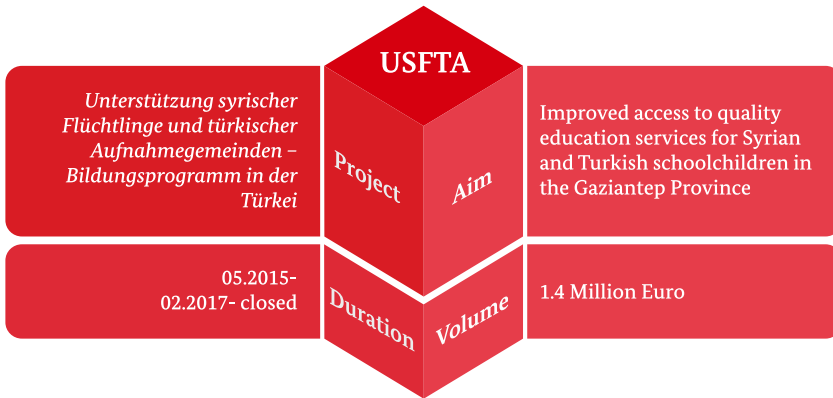
“The Turkish-German Exchange Project is an excellent opportunity to share experiences and lessons learned on migration management between German and Turkish government institutions. Our first study visit has been a unique experience as it brought together key public institutions that all work on better service provision for refugees. The institutional partnerships that are being created between Germany and Turkey are of vital importance for a successful and sustainable integration of refugees in both countries.”





7. SRHC Projects

7.1 Support to Syrian refugees and Turkish host communities – Education project pilot



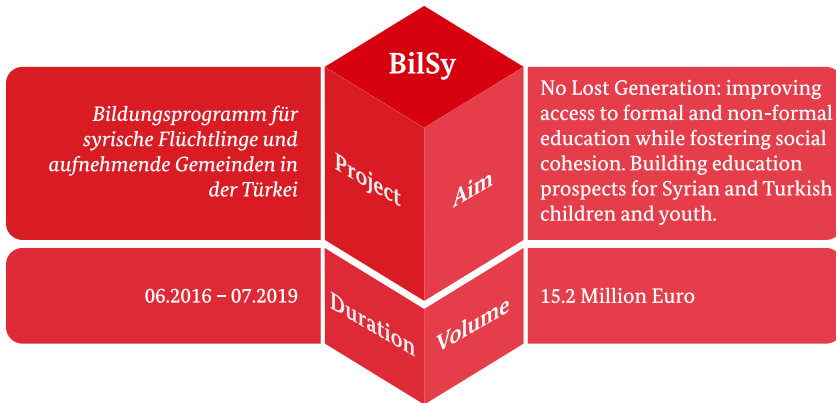
The *Support to Syrian Refugees and Turkish Host Communities - Education project pilot* (USFTA) was initiated as one of GIZ's first pilot project shortly after Minister Müller's visit in 2015. The project supported four MoNE public schools used as Temporary Education Centres (TECs) in the afternoon. The project focused on three action fields.

Action field 1: Improving access to formal education through the renovation and expansion of four MoNE school buildings in the Gaziantep Province by building more classrooms, reducing physical barriers, creating outdoor spaces for recreational and sport activities and rehabilitating WASH facilities.

Action field 2: Supporting quality education by training teachers to implement psychosocial support and positive classroom management approaches, and providing teaching and learning materials.

Action field 3: Fostering social cohesion between Syrian refugees and the Turkish host community. As a key area of work within this action field, the "Learning Together Festival", a series of structured, protective and inclusive recreational events implemented in the cities of Nizip and Gaziantep, opened opportunities for Syrian and Turkish children and youth to interact socially, and built parents' and children's awareness of the education services available in their communities.

7.2 Education project for Syrian refugees and host communities



The Education project for Syrian refugees and host communities (BilSy) is the project that scaled up the UFSTA pilot, incorporating an added focus on out-of-school youth and specific measures to foster social cohesion. The project focuses on three action fields.

Action field 1: Improving access to formal education through the renovation and expansion of the MoNE infrastructure by building more classrooms, reducing physical barriers, creating outdoor spaces for recreational and sport activities and rehabilitating WASH facilities.

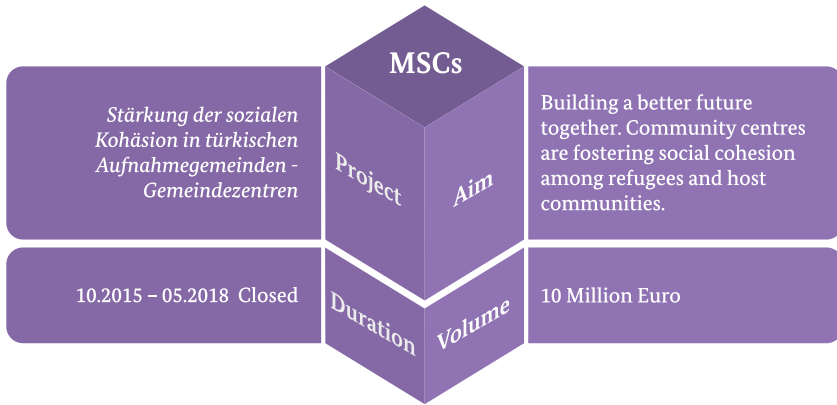
Action field 2: Strengthening the quality of education and building social cohesion through intercultural skills seminars for teachers.

Action field 3: Fostering social cohesion through sport, recreational and cultural activities and community-based volunteers' schemes for out-of-school Turkish and Syrian youth. This action field, carried out in cooperation with the German Olympic Sports Confederation (DOSB), municipalities and other local partners, includes activities to provide equipment for and rehabilitate recreational facilities so as to expand Syrian and Turkish young people's access to inclusive and engaging environments.





7.3 Support to Syrian Refugees and Turkish Host Communities - Multi-Service Centres

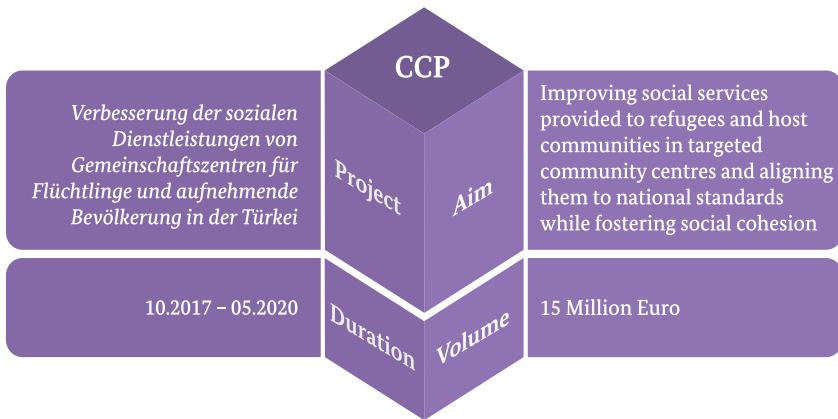


The Support to Syrian Refugees and Turkish Host Communities - Multi-Service Centres (MSCs) project is an initiative that supported eleven community centres in the most refugee-populated provinces and urban municipalities in Turkey to establish and expand community-based services. These community centres provide a wide spectrum of services including psychosocial support, legal advice, education services, language courses, skills training and recreational activities.

Through this project, GIZ supported the development of long-term partnerships among national organisations and one German international organisation. In addition, through the Community Initiative Fund, seven community-based organisations were engaged in smaller shorter-term partnerships with the aim of building their capacity and expanding the outreach of services.

The project focused on building all partners' capacity in the areas of project management, fostering transparency and accountability, expanding knowledge of technical issues and strengthening service quality and alignment with minimum standards. As a key activity, quarterly coordination meetings were convened for partners to learn through exchanges of their practices and experiences.

7.4 Community Centre Project - Improving social services of community centres for refugees and host communities in Turkey



The *Community Centre Project (CCP) - Improving social services of community centres for refugees and host communities in Turkey* is the project that built on the lessons learnt from the Multi-Service Centres project and built in an added focus on the transition of service provision to state institutions. CCP focuses on three action fields:

Action Field 1: Expanding refugees' access to social services (such as legal and psychological counselling, skill development and opportunities for intercultural exchange and social interaction) through financial and technical support to community centres and community-based initiatives, including the scale-up of the *Community Initiative Fund* to increase the outreach of services.

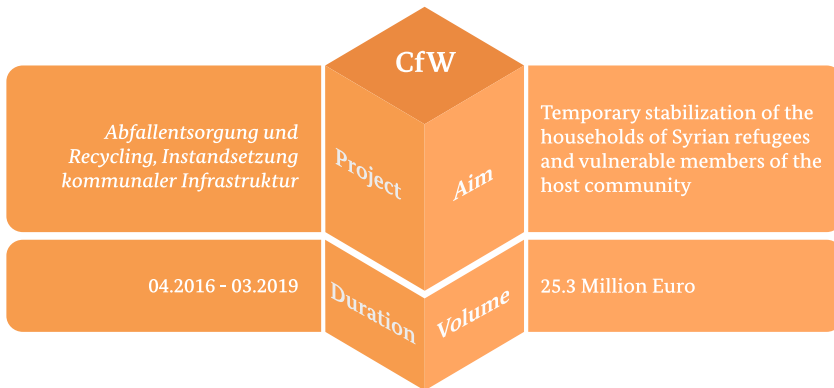
Action Field 2: Bringing services into alignment with national standards by supporting the development of networking structures between community centres and state institutions, and facilitating the complementarity of non-profit sector and state institutions in the provision of services.

Action Field 3: Developing the capacities of community centres and other service providers through structured trainings, frequent field visits and regular opportunities to exchange best practices. The training opportunities are in the field of management and technical skills improve the quality services.





7.5 Cash-for-Work – Waste disposal and recycling, and rehabilitation of municipal infrastructure

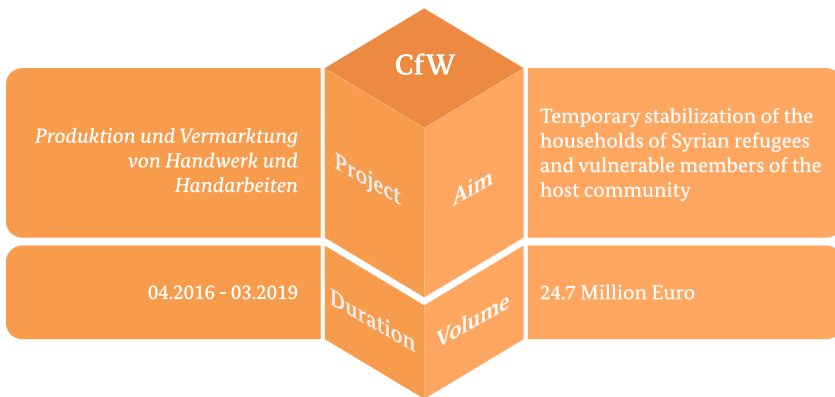


Employment creates prospects for Syrian refugees and members of the Turkish host community to improve their own economic situations while working together to improve public infrastructures and services.

The *Waste disposal and recycling, and rehabilitation of municipal infrastructure* (CfW) project provides short-term jobs for Syrian refugees and vulnerable members of the Turkish host community with the aim to contribute to the temporary stabilization of their households while they acquire skills and experience to improve their further employment prospects. Participants are paid the Turkish minimum wage. The project is carried out in cooperation with Turkish institutions, municipalities and other local partners.

This project also contributes to social cohesion by promoting interaction and engagement between Syrian refugees and Turkish community members in public and in work spaces, and by alleviating the pressure caused by competition for work and money.

7.6 Cash-for-Work – Production and commercialization of crafts and handicraft



Training and the creation of jobs in the skilled-trades sectors generates income, opens opportunities for future employment prospects, and promotes craftsmanship for Syrian refugees and targeted Turkish citizens.

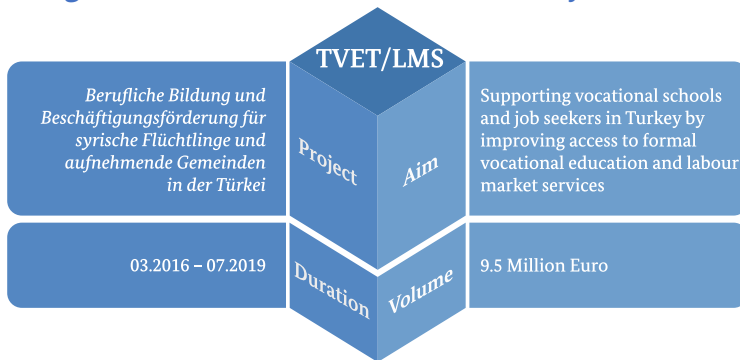
The *Production and commercialization of crafts and handicraft* (CfW) project provides opportunities for training in trade skills and crafts. Depending on their experiences and interests, Syrian refugees and vulnerable host community members participate in trainings in fields such as carpentry, tailoring, mechanics and vehicle maintenance, bookkeeping, catering, crafts, or the service sector. Trainees receive a stipend for their participation in courses, income which enables them to meet their immediate, basic needs as they acquire new skills and expand their work prospects within the labour market.

Project activities also include support for refugees' opportunities for self-employment through the provision of start-up grants and the registration of unlicensed Syrian businesses. Additionally, this project contributes to social cohesion by promoting interaction and engagement between Syrian refugees and Turkish community members in public and learning spaces.





7.7 Supporting technical and vocational education and training and labour market services for Syrian refugees and host communities in Turkey

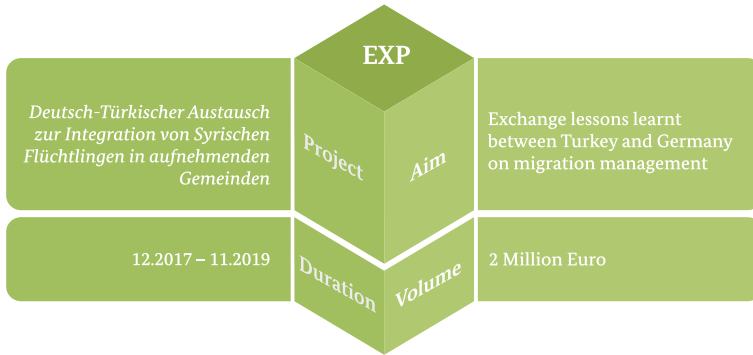


The *Supporting technical and vocational education and training and labour market services for Syrian refugees and host communities in Turkey (TVET/LMS)* project works through two components, both with the aims to promote pathways to employment for Syrian refugees and vulnerable groups within the Turkish host community, and to improve their access to socio-economic measures.

The LMS component of the project focuses on providing and expanding employment services such as job placements and career guidance, while adapting approaches within those services to the specific needs and skills of Syrian refugees. GIZ implements the project in cooperation with different partners from the public and private sectors, including the Turkish Employment Agency (İŞKUR), the Chamber of Commerce, and the NGO Syrian Entrepreneurs. The project serves both Syrian refugees and vulnerable members of the host community, and includes trainings on topics such as the Turkish work culture and tax system, marketing and business development, as job fairs to connect job seekers with potential employers.

The TVET component is implemented through a close collaboration between GIZ and the TVET Directorate General of MoNE, with a focus on strengthening Turkey's formal vocational and training education system. The project targets ten TVET schools and centres in three provinces, Bursa, Gaziantep and Ankara. Through this initiative, Turkish and Syrian students have accessed vocational courses that have been improved through their opportunities to use state-of-the-art machinery, and related trainings and improved learning environments.

7.8 Turkish-German exchange on the integration of refugees into host communities



The Turkish-German exchange on the integration of refugees into host communities project is the newest addition to the SRHC Cluster. The Exchange Project collaborates with the same state actors as the SRHC Cluster projects. It offers overarching support to facilitate the dialogue with these partners. To develop the capacities of all parties involved and to facilitate practical solutions to common challenges, the Exchange Project builds on the lessons learned in Turkey and Germany.

The Exchange Project coordinates closely with the other SRHC Cluster projects to create synergies for the benefit of both Turkish and German partners.

The working areas of the Project are:

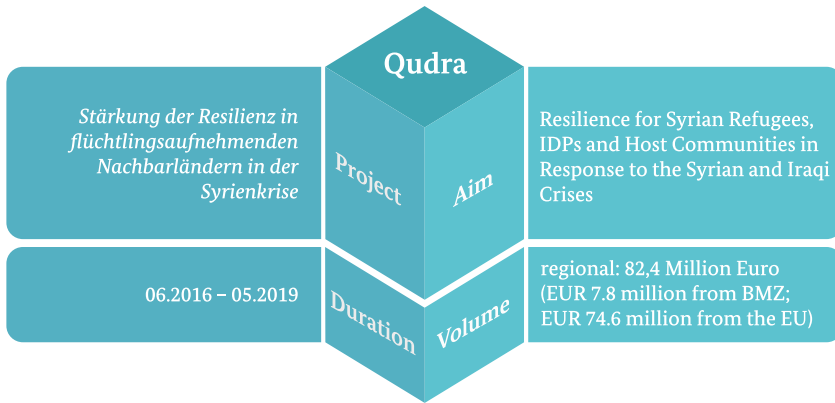
- Supporting ministries in identifying their strategic priorities to better integrate refugees into public services
- Establishing exchange formats, such as study visits, conferences, trainings, peer-to-peer learning networks as well as institutional partnerships between German and Turkish state actors
- Capacity development measures and technical assistance for the revision and implementation of guidelines at a ministerial level

The Exchange Project's direct target group is the public authorities of Turkey. By strengthening the capacities of these institutional partners, refugees and host communities are to benefit from improved public services.





7.9 Qudra - Resilience for Syrian refugees, IDPs and host communities in response to the Syrian and Iraqi crises



The Qudra Programme is a regional action financed by the EU Regional Trust Fund in response to the Syrian Crisis, the ‘Madad’ Fund and the German Federal Ministry for Economic Cooperation and Development (BMZ), seeking to strengthen resilience for Syrian refugees, IDPs and host communities in response to the Syrian and Iraqi crises. The programme is jointly implemented by the Deutsche Gesellschaft für Internationale Zusammenarbeit (GIZ) GmbH, Expertise France, Spanish Agency for International Development (AECID) and Hungarian Interchurch Aid (Ökumenikus Segélyszervezet, HIA) in programme partner countries of Jordan, Lebanon, Turkey and Kurdistan Region of Iraq/KRI. “Qudra” is an Arabic word meaning ‘strength, ‘ability’ or ‘resilience.’

Qudra activities aim at strengthening the local and national level by improving service delivery, supporting livelihoods and increasing employment opportunities for vulnerable men, women and, especially, youth and children. In compliance with national laws and regulations, Qudra seeks to assist all stakeholders in Turkey in four key areas:

- **Education Infrastructure:** Improving school infrastructure and access to extracurricular activities (e.g. sports);
- **Skills Development:** Expanding and improving basic vocational skills
- **Social Cohesion:** Strengthening social cohesion through access to information and community-based services;
- **Facilitating Dialogue and Dissemination:** Promoting dialogue and exchange of experience among all stakeholders on policies conducive to enhanced resilience of refugees, IDPs and host communities.

One of the key strengths of Qudra is its broad cross-sectoral portfolio and modular approach in implementation, which allows a variety of interventions focused on key aspects of livelihood and service provision. There is a high flexibility within and across the modules, which enables Qudra to explore increasing synergies between the modules.

Comparing implementation of those modules from a regional perspective contributes to identifying regional solutions and synergies while adjusting and adapting the implementation strategies to national and local conditions, plans, and standards.

Published by the
Deutsche Gesellschaft für Internationale Zusammenarbeit
(GIZ) GmbH

Registered offices
Bonn and Eschborn, Germany

GIZ Support to Refugees and Host Communities (SRHC)
Cluster Turkey
Aziziye Mahallesi, Pak Sok. 1/101
+90 312 466 70 80, Ext. 200
giz-tuerkei@giz.de
www.giz.de/turkey

As at
October 2018

Printed on recycled paper.

Printed by:
Mert Copy
Ankara, Turkey

Design, infographics and illustrations:
Alican Çizmeci
Ankara, Turkey

Photo Credit:
“Black & White Photography and Darkroom
Project” - photos taken by Syrian and
Turkish children aged 8-16.

Photograph of German Federal Minister
Dr. Gerd Müller on P.3, Ute Grabowsky /
photothek.net

Map Credit:
Letizia Carnevali, GIZ Turkey

Publication coordinated by:
Gudrun Orth, Miresi Busana, Samira Lindner,
GIZ Turkey

GIZ is responsible for the content of this
publication

On behalf of the
German Federal Ministry for Economic
Cooperation and Development (BMZ)